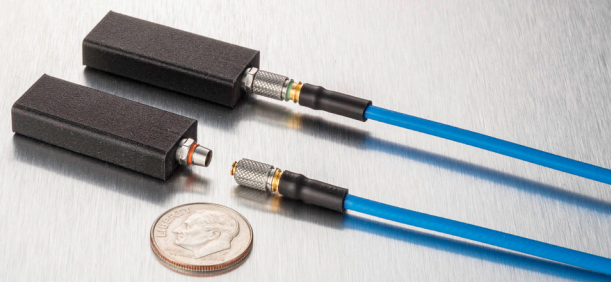




# TLMP<sup>TM</sup> RF CONNECTORS

Designed for Military Aerospace  
and Space Flight



# What is a TLMP Connector?

# Positive Locking

## The SMP & SMPM Evolution

### TLMP

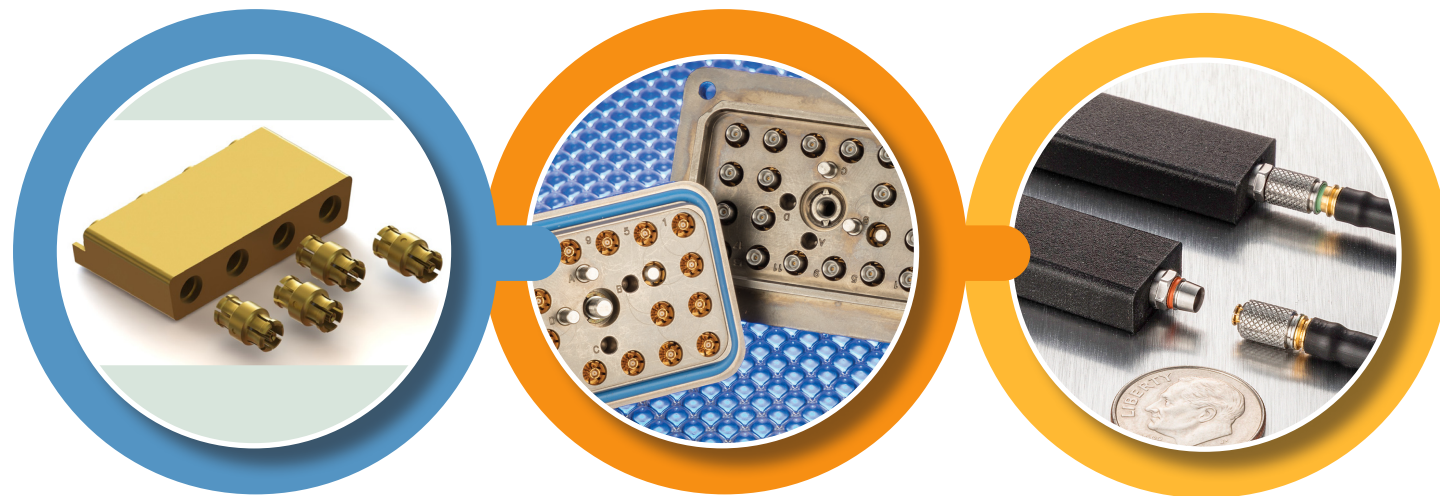
**T** TIMES

**L** LOCKING

**M** MINIATURE

**P** PUSH-ON

TLMP connectors address the disadvantages of SMP/SMPM connectors.



### SMP/SMPM

- Small Form Factor
- Environmentally, EMI and Power Challenged

### MMP

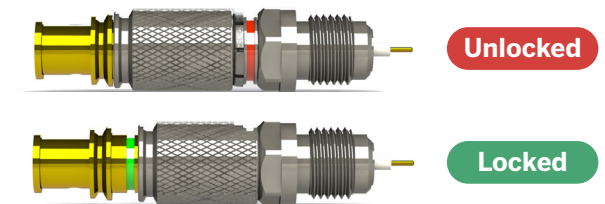
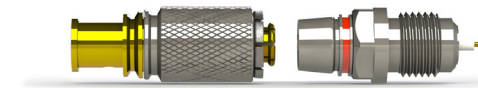
- Small Form Factor
- + Improved Environmental, Shielding and Power
- Difficult to use in a single port configuration

### TLMP

- Small Form Factor
- + Improved Environmental, Shielding and Power
- + Single Interconnect
- Frequency from DC to 60 GHz

## Positive Locking

VISIBLE "GREEN/RED"  
COLOR LOCKING



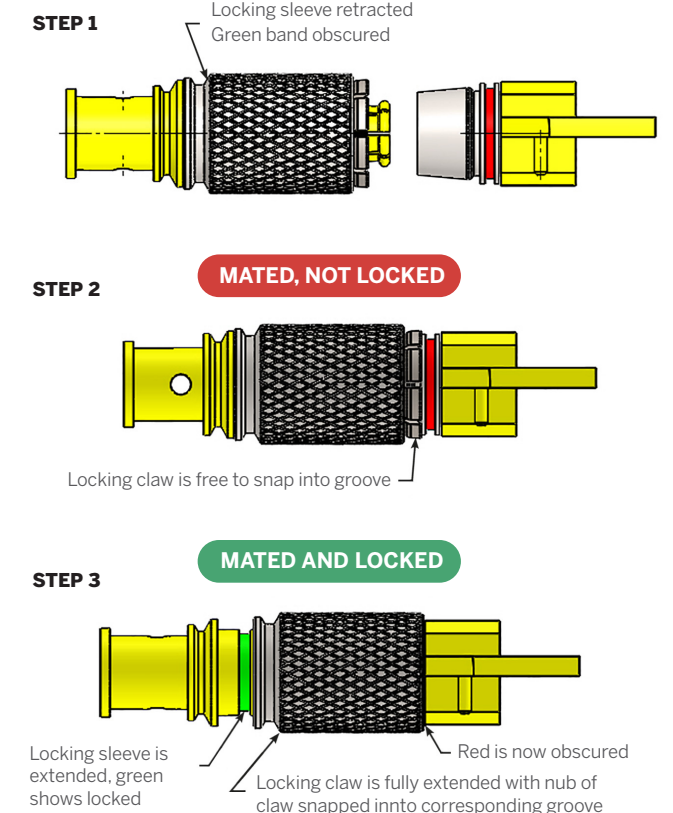
## Vibration Proof

Prevents de-mating under vibration and shock

## High Power/Voltage

The design overlaps the insulators cutting off a direct path to ground from the center conductor to the outer shield and enabling higher power or voltage functionality at higher altitudes.

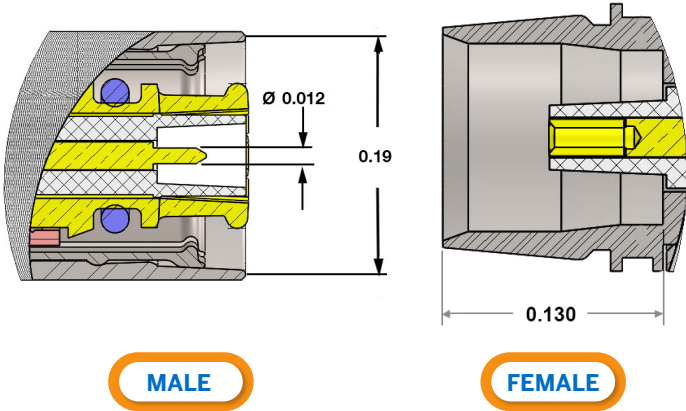
### TLMP MATING SEQUENCE





# Features

# TLMP Configurations



**Finish**  
Gold/Passivated

**Mechanical Durability**  
1000 mating cycles

Component	Material
Bodies	BeCu / Stainless Steel
Contacts	BeCu
Insulators	PTFE

Electrical	
Frequency range	DC to 60 GHz
Insulation Resistance	> 5000 MΩ
Dielectric Withstanding Voltage	per MIL-STD-202 method 301
Contact Resistance	3 mΩ
RF Leakage	-105 dB @ 40 GHz
VSWR	1.05 + (.007 x f (GHz))

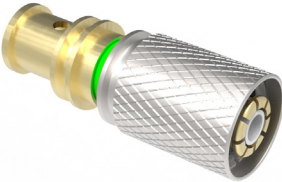
### Environmental (per MIL-STD-202)

Vibration	Method 202 test condition D
Mechanical shock	Method 213, Cond I
Thermal shock	Method 107, Cond B
Corrosion	Method 101, Cond B 5% salt solution
Moisture resistance	Method 106
Corona level	Corona free @ 70,000 feet (dependent on cable size)
Temperature rating	-65°C to +165°C

All dimensions are in inches.



Female for PCB Launches



Male for Flex and Semi-rigid



Right Angle Male for Flex and Semi-rigid (Nested configs)



Female for MIC Package Mounts



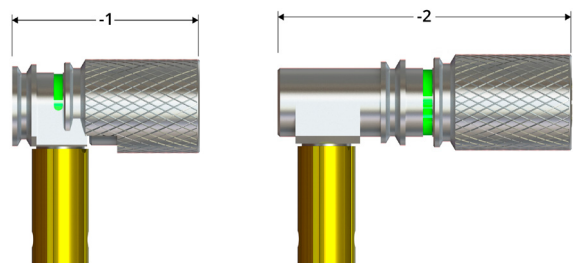
### Cables

- |            |                           |
|------------|---------------------------|
| • PTF047   | PTFlex 047                |
| • PTSRB047 | PhaseTrack 047 Semi-Rigid |
| • PTSRB086 | PhaseTrack 086 Semi-Rigid |
| • PT110    | PhaseTrack 110            |
| • MT130    | MilTech 130               |
| • TFlex405 | TFlex405                  |
| • 047 S/R  | 047 Semi-Rigid            |
| • 086 S/R  | 086 Semi-Rigid            |



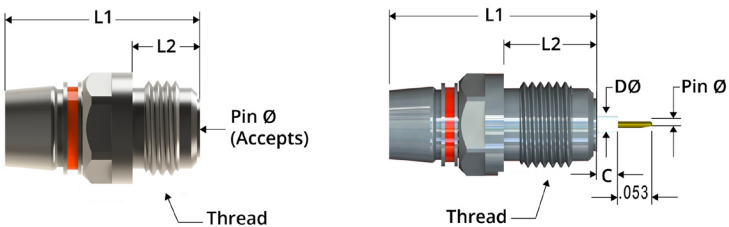
# Connectors

# Adapters



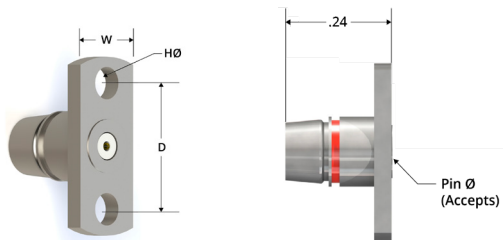
Angle Male for Flexible and Semi-Rigid Cable

	Cable Type	-1 (in)	-2 (in)
PN 26550-X	PT047	0.370	0.570
PN 26552-X	PT110	0.370	0.570
PN 26553-X	MT130	0.370	0.570
PN 26548-X	TFlex405	0.370	0.570
PN 26551-X	047 S/R	0.370	0.570
PN 26549-X	086 S/R	0.370	0.570
PN 26554-X	PTSRB086	0.370	0.570



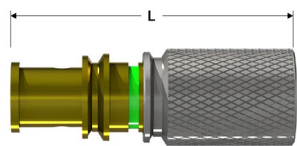
Female for MIC Hermetics

	L1	L2	C	Ø D	Pin Ø	Thread
PN 26531	0.392	0.175	0.041	0.032	0.012	0.164.64
PN 26555-1	0.335	0.115	-	-	0.012	0.164.64



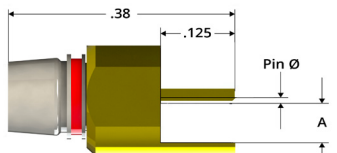
Female for MIC Hermetics

	D	H Ø	W	Pin Ø
PN 26542-1	0.282	0.073	0.165	0.012
PN 26542-2	0.282	0.073	0.165	0.015



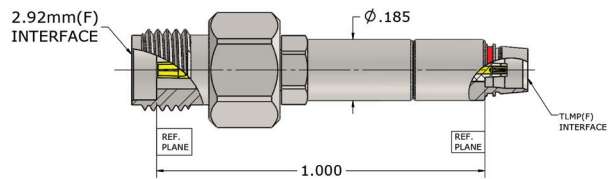
Male for Flexible and Semi-Rigid Cable

	Cable Type	L(in)
PN 26543	PT047	0.440
PN 26545	PT110	0.500
PN 26546	MT130	0.500
PN 26524	TFlex405	0.500
PN 26544	047 S/R	0.440
PN 26532	086 S/R	0.458
PN 26547	PTSRB086	0.458

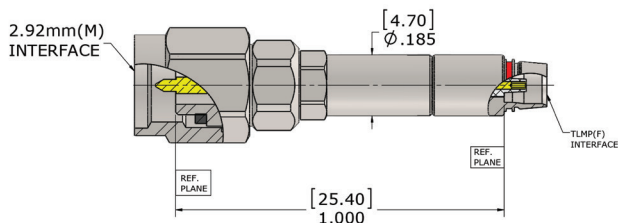


Female PCB Edge Launch

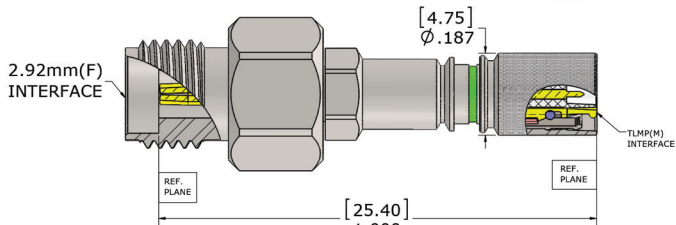
	A	Pin Ø
PN 26540-1	0.073	0.015
PN 26540-2	0.056	0.012



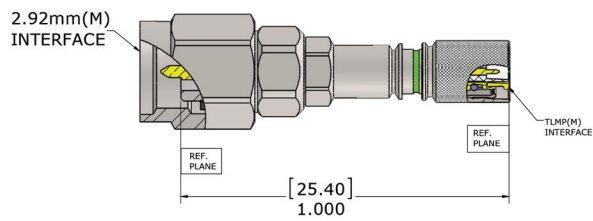
26952



26953

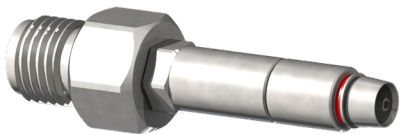


26951



26950

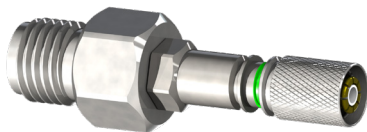
## 2.9MM ADAPTERS



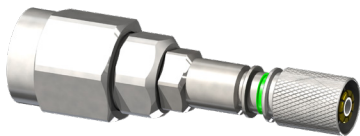
26952



26953

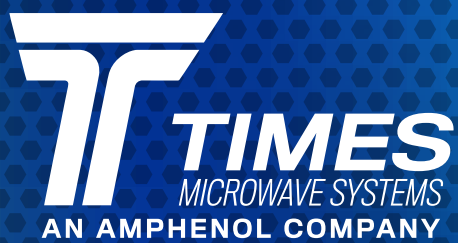


26951



26950





358 Hall Avenue, Wallingford, CT 06492

**T** 203.949.8400 [www.timesmicrowave.com](http://www.timesmicrowave.com)

TLMP 05/20